

PROJECTS

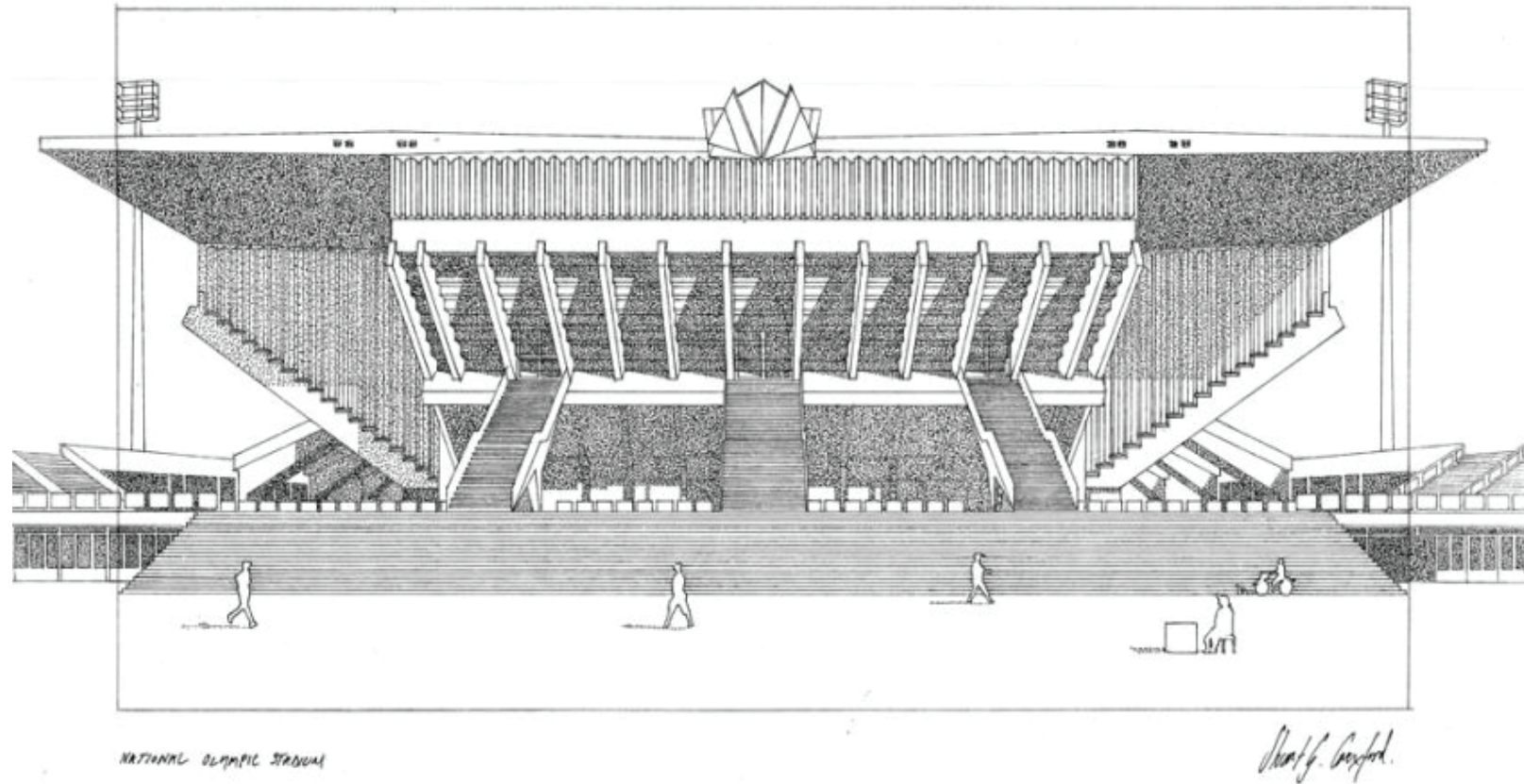
SINCE 1994

CONTENTS

PHNOM PENH

PROVINCES

WORLDWIDE REFERENCES



PUBLIC BUILDINGS

EMBASSIES

AIRPORTS

HOSPITALS

SCHOOLS

FACTORIES

GOVERNMENTAL



Delegation of European Union to Cambodia

Wall Porcelain Tiles
 Bamboo Flooring
 Green Roof Waterproofing System
 Wood Treatment Paint & Steel Paint
 Elevator, Electrical Generators & Automation Motors
 Lighting Protection
 Electrical Equipments, Trunking, Inversor 1600A, Cables
 Circuit Breakers & Enclosures
 Locks & Hardwares



French Embassy

Roof Waterproofing
Bullet Proof Window Glass
Locks & Hardwares
Antipanic Locks & Doors
Electrical Equipments & Lighting Fixtures
Multi Alloy Solar Film & Thermal Insulation
Anti Termite Treatment



US Embassy

- Electrical Supplies
- Smoke Exhaust System
- Wood Treatment & Finishing
- Antitermite Treatment



ស្ថានីយចេញដំណើរក្នុងស្រុក
domestic departures

ច្រកទ្វារ
gates

0



- POCHENTONG Airport**
- Electrical Supplies
 - Circuit Breaker & Enclosures
 - Emergency Equipments & Antipanic Locks
 - Smoke Exhaust System
 - Thermal Insulation
 - Roof Waterproofing
 - Plastering And Finishing
 - Raised Technical Floor
 - Master Key System

Hopital Calmette

Electrical Supplies
Emergency Equipments
Door Equipments & Master Key System
Waterproofing
Paint & Wall Finishing





Kantha Bopha Hospital
Waterproofing & Insulation System
Electrical Equipment, Circuit Breakers
Main Electrical Board & Invertor
Door Equipments & Hardwares
Lighting Equipments



PPM Pharma Product Manufacturing
Waterproofing System
Drainage work
Green Roof Systems





Institut de Technologie du Cambodge
Waterproofing Systems
Door Equipments
Painting & Finishing



Comptabilité
គណនេយ្យ
Accounting

Lycée Français René Descartes

- Electrical Supplies
- Insulation System
- Wood Treatment
- Waterproofing



ICAN International British School
Acoustic & Thermal Insulation
Soundproof XPS
Circuit Breakers



Total Service Station
Electrical Supplies
Emergency Equipments
Waterproofing Solutions
Painting & Tools



Grand Phnom Penh Golf Club

Geotextile
Foundation & Ground Work

Betagro Mill Plant

Skimcoat & Rendering
Wall & Floor Finishing



Maru T Ohtsuka Factory
Floor & Surface Preparation
Industrial Flooring & Leveling Products

Water Pumping Station

Waterproofing Solutions
Concrete Admixtures





Cambodia's National Council Of Minister

Floor Self Leveling
Floor Preparation & Protection
Smoke Exhaust System



RESIDENTIAL & SHOPS



Hotel Cambodiana

- Roof Waterproofing
- Electrical Supplies
- Door Equipments
- Wood Treatment & Finishing

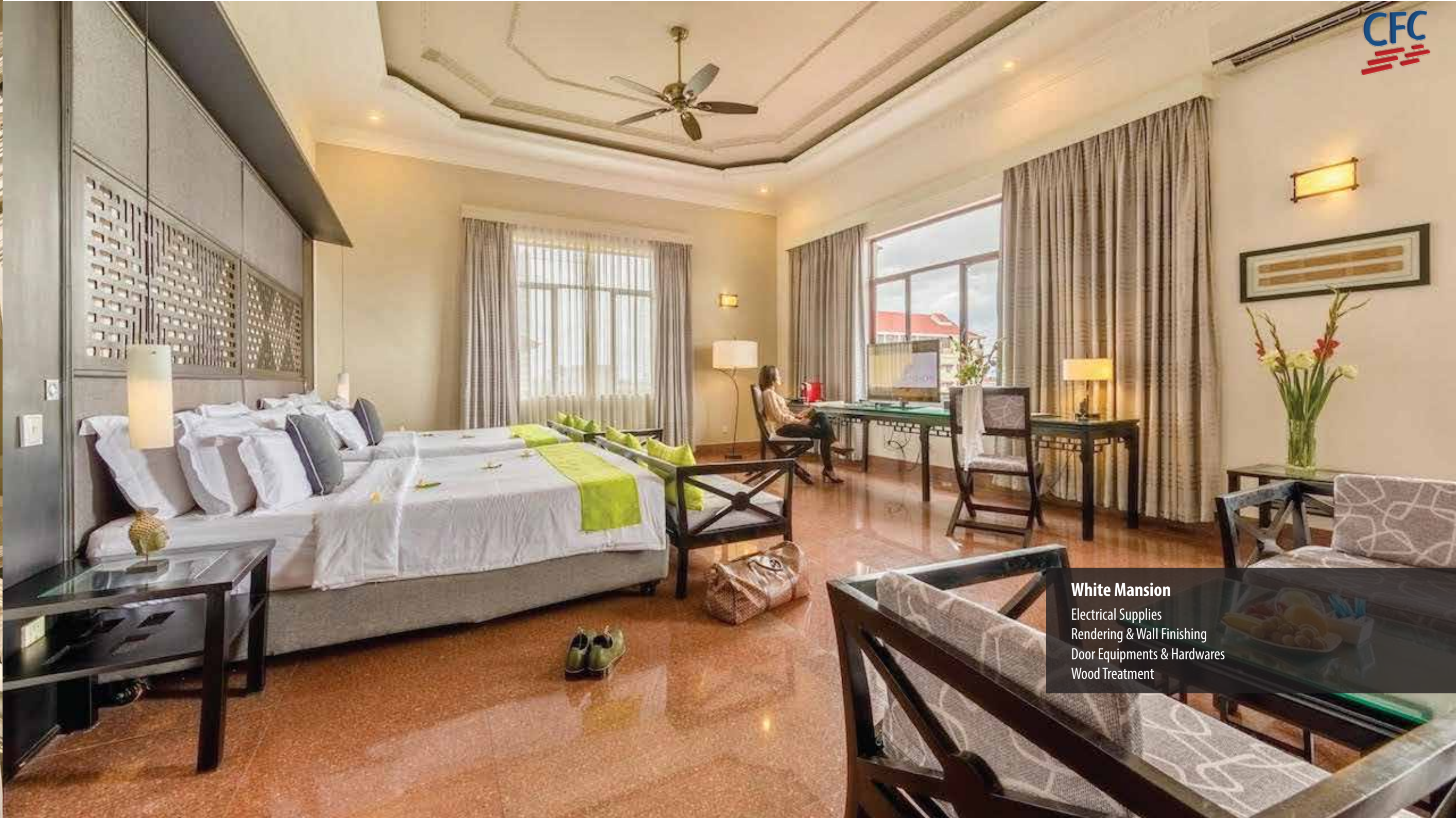


Raffles le Royal Hotel

Electrical Supplies
Floor & Surface Protection
Waterproofing System



Penthouse Residence
Wall Rendering & Finishing



White Mansion

Electrical Supplies
Rendering & Wall Finishing
Door Equipments & Hardwares
Wood Treatment



Borey Peng Huoth
Electrical Supplies
Emergency Equipments
Circuit Breakers



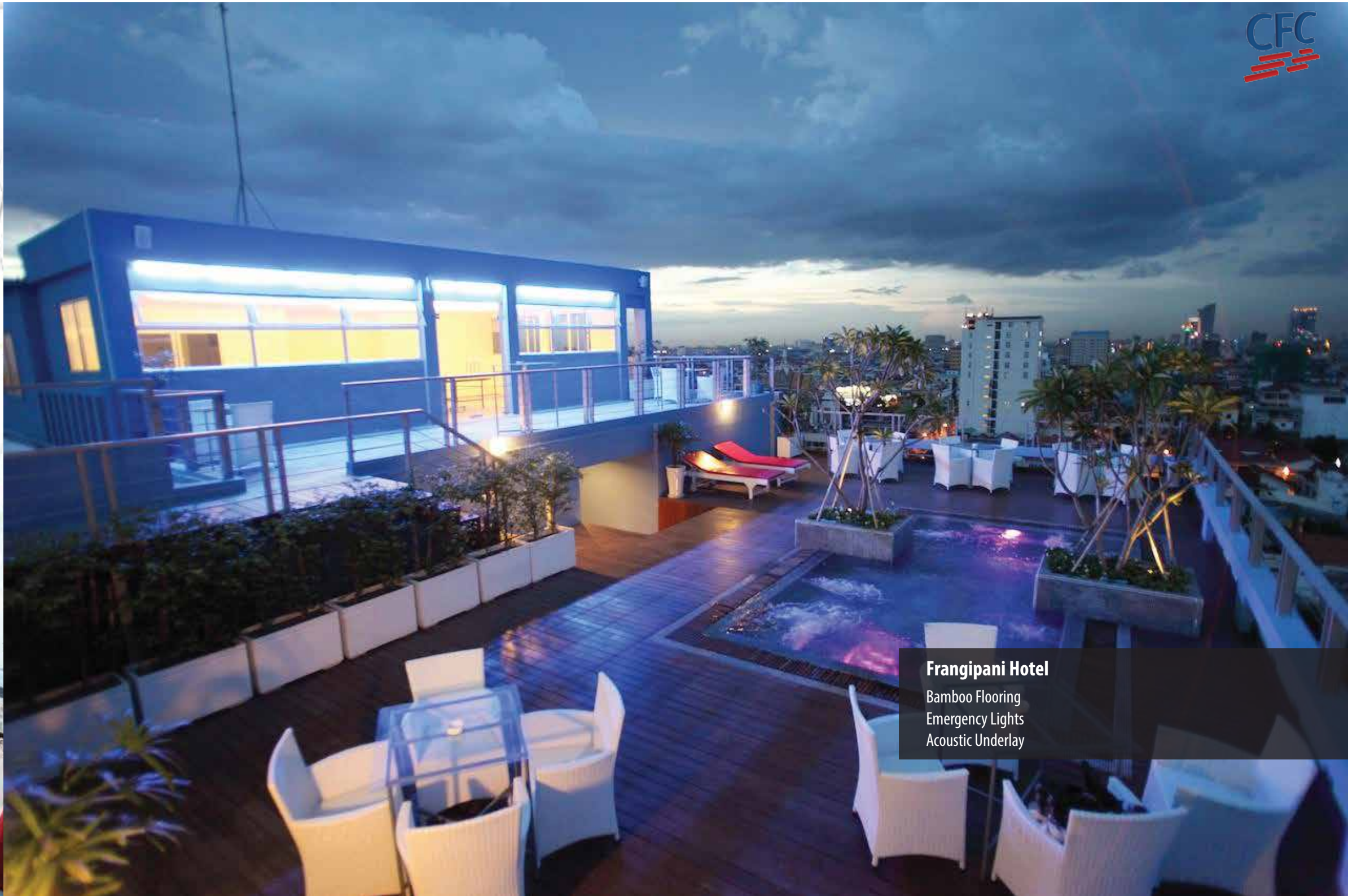
Tronum Apartment

Bamboo Flooring
Acoustic Underlay
Wood Treatment



HABITAT Condominium

Tiling Systems
Tiles Protection
Waterproofing & Rendering



Frangipani Hotel

Bamboo Flooring
Emergency Lights
Acoustic Underlay



Building 240
Roof Insulation System
XPS Board



Terrazza Restaurant

Rendering & Finishing
Wood Treatment
Bamboo Flooring



makro

ដៃគូអាជីវកម្មរបស់អ្នក



MAKRO Supermarket
Flooring & Surface Protection
Rendering & Finishing



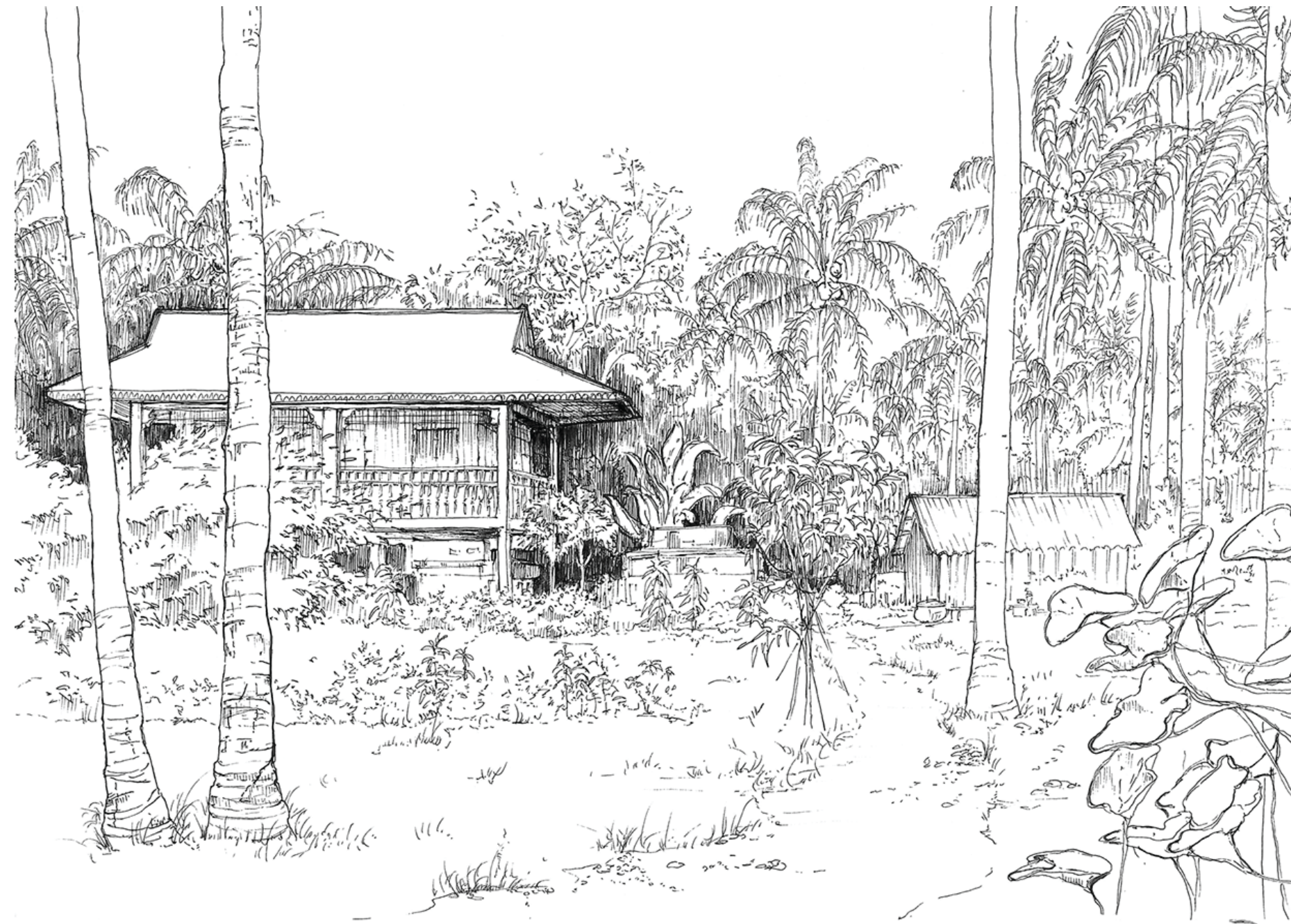
Aeon Mall 2 Sen Sok

Drainage & Ground Preparation
Roof Waterproofing



Hong Kong Land

Flooring & Surface Preparation



PROVINCES

SIEM REAP

SIHANOUKVILLE

KEP



Victoria Angkor Resort & Spa

- Wood Treatment & Finishing
- Rendering & Skimcoat
- Waterproofing
- Electrical Supplies
- Doors Equipments & Locks



Viroth's Hotel

Tiling System

Tile Grout

Acoustic & Thermal Insulation



Grand Sokhalay Hotel

Wood Treatment
Antitermite
Electrical Supplies
Technical Mortars & Surface Protection



Amansara Resort

Waterproofing System

Electrical Supplies

Technical Mortars & Surface Protection



Royal Angkor Resort & Spa

Painting & Finishing
Electrical Supplies & Cables
Bamboo Flooring



Belmond La Résidence Angkor

Wood Treatment & Finishing
Door Equipments
Toilet Equipments



CHILDREN'S HOSPITAL KANTHA BOPHA III (JAYAVARMAN VII)

SIEM REAP ANGKOR - KINGDOM OF CAMBODIA

We were able to build this Hospital with 600 beds including a pediatric department, an infantile surgery department and a maternity thanks to the great donations by a Swiss Family

Dr. Beat Richner

- JAYAVARMAN VII Hospital**
- Acoustic Insulation Systems
 - Sonorisation Equipments & Stereo
 - Seating Equipments Set
 - Cables & Electrical Board
 - Multi Translating DeviceSystem



FCC Angkor

Insulation & Floor Underlay
Vapor Barrier
Bamboo Flooring



Baphuon Temple
Stone Protection & Finishing
Restoration Work
Waterproofing



Heineken Factory

Electrical Supplies
Insulation Systems
Vapor Barrier



Royal Sands Resort Koh Rong
Tile Adhesive
Wall Rendering & Finishing



Sihanoukville Port
Waterproofing Systems
Geotextile
Master Key & Locks



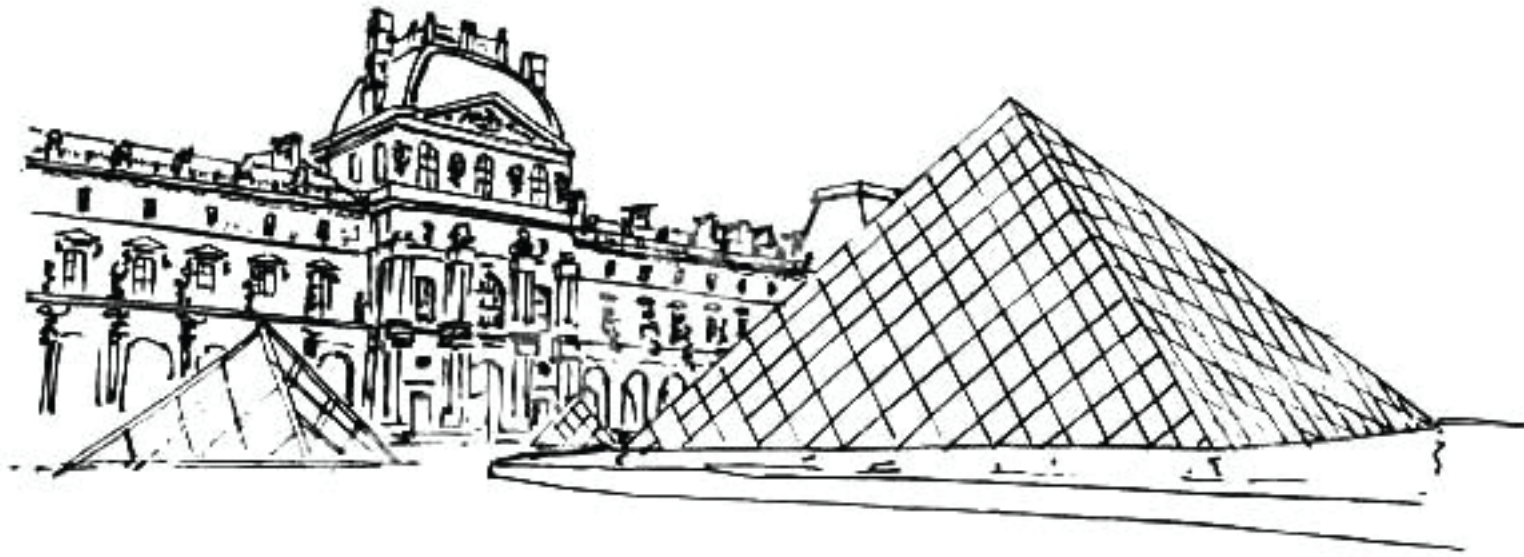
KEP Real Estate Properties

Waterproofing Systems
Wood Treatment & Finishing
Geotextile & Ground Preparation



Veranda Natural Resort

Foundation & Ground Work
Rendering & Finishing
Wood Treatment



WORLDWIDE



SERI IL FORNO 1961
ROMA - ITALIA

REGENERATION collection
Regeneration cut bump 45x90
(44x89,46 cm - 17.33"x35.23")

HYDRAULIC collection
Hydraulic patchwork natural 30x30
(29.75x29.75 cm - 11.71"x11.71")

architects: **STUDIO ARREDAMI**



**GRAND HOTEL
LVOV - UKRAINE**

MATERIA collection
Materia black flame 45x90
(44,63x89,46 cm - 17,57"x35,22")
Materia white natural 60x60
(59,55x59,55 cm - 23,44"x23,44")

architects: **ARS – IDEA**
INTERIOR & ARCHITECTURAL DESIGN



RESTAURANTE A VEIGA
BARCELONA- SPAIN

ALCHEMY 7.0 collection
Alchemy blue natural 60x60
(59,55x59,55 cm - 23.44"x23.44")

architects: **ANTONIO TORRES**
EXCLUSIVE MAGIC SL



RESTAURANT KAFAN
KREMENCHUG - UKRAINE

CAST IRON collection
Cast iron oxidum decor ramp
(29.75x59.55 cm - 11.71"x23.44")



Hanoi Museum, Vietnam

Bituminous Waterproofing System 35140SQM

Green Roof System Integration

Imperdan FP 48 P plastic membrane



Renault Nissan Factory, Maroc

Bituminous Waterproofing System 140000SQM

Glasdan 40 GP GRIS

Esterdan 30 FM

POLYDAN 180 50/GP

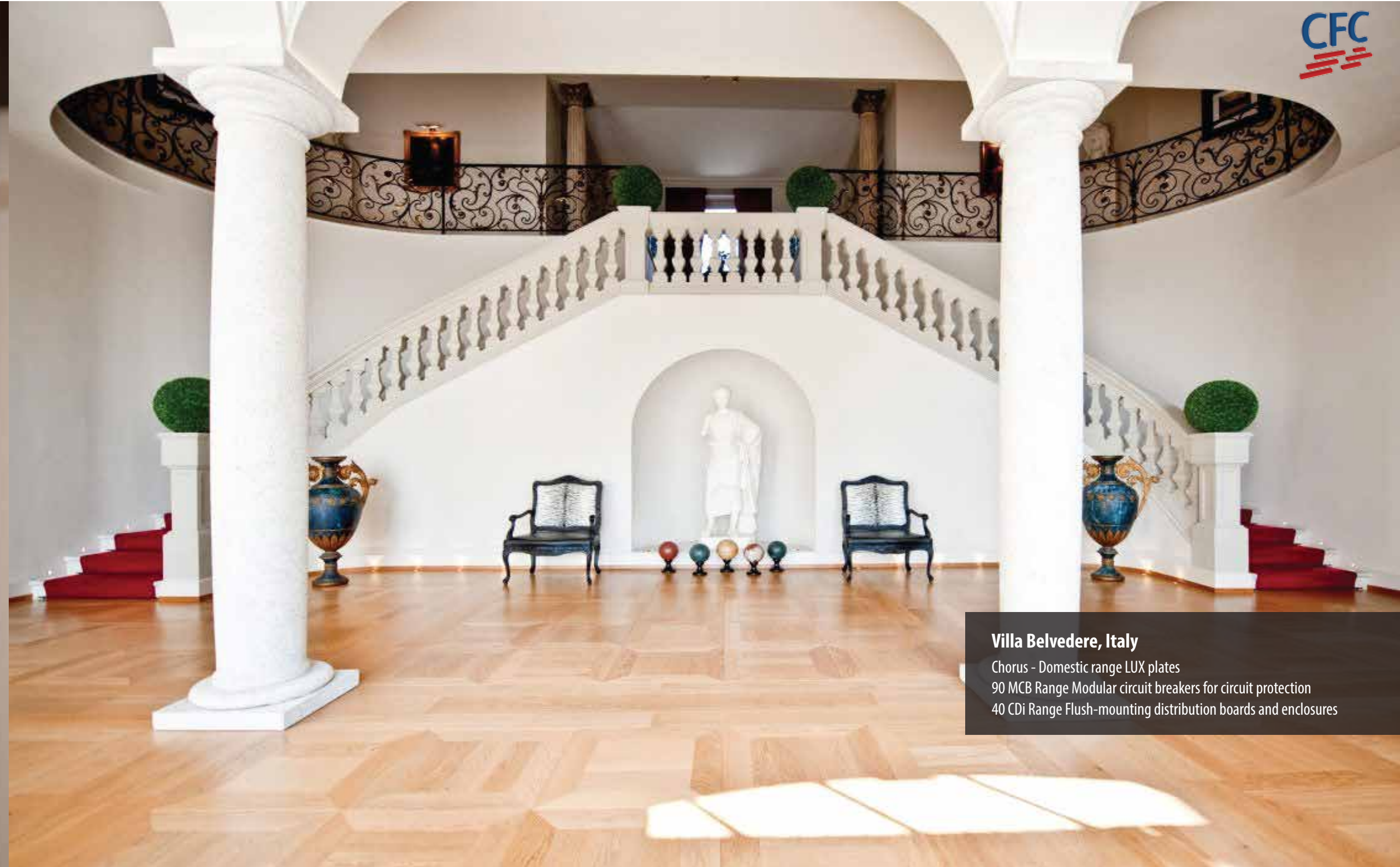


Sedriano Municipal Sports Centre, Italy
Industrial Lighting Equipments



King Kong Business Center, Italy

Home Automation KNX Easy Bus
90 MCB Range Modular circuit breakers for circuit protection
IB Range Interlocked socket-outlets IEC 309 standards



Villa Belvedere, Italy

Chorus - Domestic range LUX plates
90 MCB Range Modular circuit breakers for circuit protection
40 CDi Range Flush-mounting distribution boards and enclosures



Allianz Arena, Germany
Ultimate Mineral Wool 50 000 SQM
Climaver Series

**Aida Diva Cruise Ship**

Marine Product Insulation Systems
Lighting Systems



BASHNEFT-UFANEFTKHM Oil Refinery, Russia

Stone Wool High Service Temperatures
ISOTEC МП(ХС)-100 GOST 21880-2011



Eiffel Tower Lifts, France
Solar Heat Control Films



European Parliament, Belgium
Solar Heat Control Films

Acropolis Museum, Greece
Solar Heat Control Films



Galleries Lafayette, Paris
Solar Heat Control Films

SINCE 1994

www.cfc-cambodia.com

